

BOILEX METALS



BOILEX METALS

ENGINEERS & CONTRACTORS

REG NO: KL13D0002281 | GST IN : 32AATFB7677H1ZY



Ebenezer Nagar, Ayyanthole,
Thrissur- 03, Kerala

☎ 9061328721 , 9846588327

✉ info@boilexmetals.in

Website : www.boilexmetals.in

“ Boilex Metals ” aims to be one of the best leading company for tomorrow’s world of business, harmonizing innovative and progressive methods with its experience, excellence and high-Caliber workforce. Our goal is to surpass our client’s expectations by providing world class service at competitive prices. Our projects are a testament to the trust our clients hold on Boilex Metals and a evidence of our promise to deliver excellence.

We , established in 2015, the company started its contract works with installation of Fire Fighting pipes and equipment’s. Presently enlarging our resource to High-rise Tower and in many other prestigious projects of Kerala. The company has also started construction works of villas and apartments. Initially started with a small team and belief and dedication of our team presently we have a good enough work force to carry out all our projects in a professional and well-timed method.



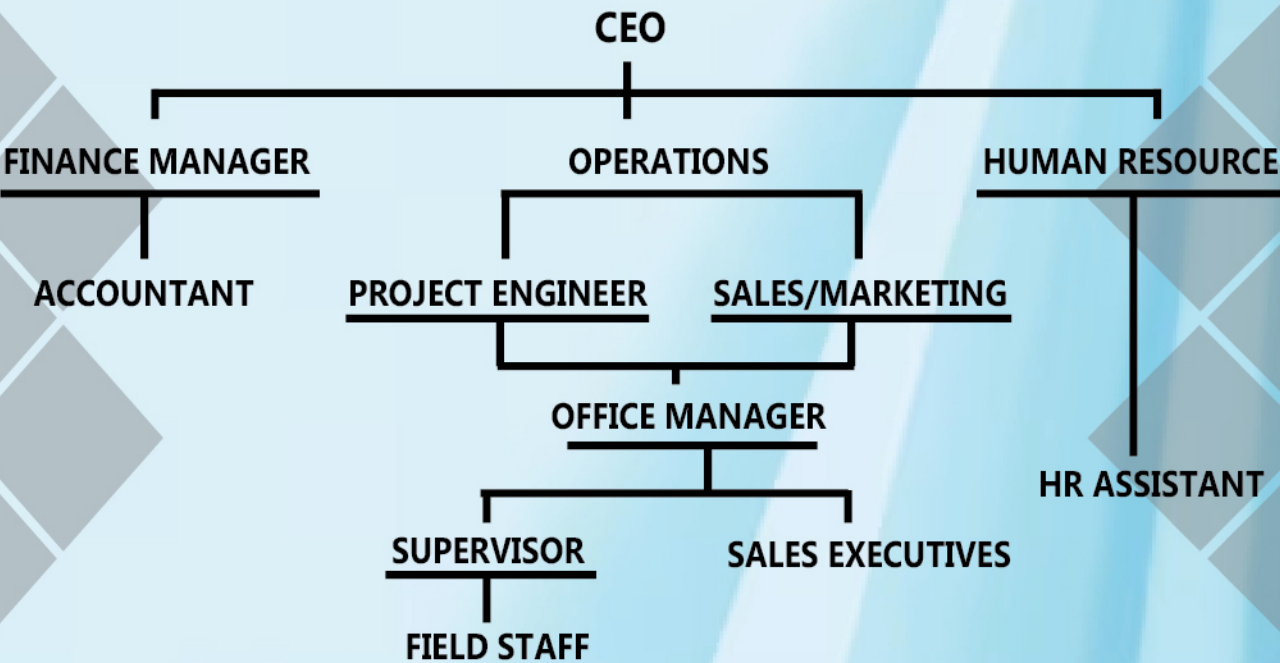
Boilex Metals, we are committed in providing the highest level service in designing, supply, installation, testing, commissioning and annual maintenance. We not only offer you product, but we also back up with full servicing and maintenance options. Provide services of live safety solutions for its clients and communities where we live, work and serve.

Our contract should be fully legal supportive statement. Quotation sent to you according to your drawing. Engineer with rich experience in design drawing according to client’s requirements. Finaly a plan will be approved; an agreement paper will sign by client & contractor. The payment terms will be scheduled and marked in the agreement before start the projects.

Boilex Metals has a strong professional team with more than 50 employees who provide highest quality services on schedule and with in the budget. Our project management experts ensure the successful delivery of projects from inception to completion.

The company is dedicated to ensuring the well-being and security of its employees by providing essential benefits. These include HRA (House Rent Allowance) to assist with housing expenses, PF (Provident Fund) benefits for building a retirement corpus through regular contributions, often matched by the employer, and ESI (Employee State Insurance) benefits to cover unforeseen medical expenses, promoting overall health and welfare. These benefits underscore the company’s commitment to the comprehensive welfare of its workforce, ensuring financial stability, health, and security.

ORGANISATIONAL STRUCTURE





Dream it....

Design it....

Build it....

Civil Construction

Boilex Metals, as civil contractors, we plan to explore and expand our potential by meeting the challenges of the future and build a better tomorrow. We are offering excellent services to our clients by on time completion of our projects through our highly experience and competent personal. Our Civil construction team are surpassing client expectations and setting a new benchmark for our competitors. Our construction division focuses on construction projects ranging from residential (starting price 1250/- per sq.ft) & large scale unit developments to commercial fit outs. We built our reputations by performing the highest quality works to commercial and residential units. As a best construction company in Kerala, we provide services for both the public and private sector. Our services include Floor plan, Drawing sanction, Estimation and Supervision.



Project : Engandiyur, Thrissur
Client : Prakash T

We specialize in

- Construction of Homes
- Commercial Complexes
- Apartments
- High-end Villas
- Office & Houses Renovation



Munnar Valley Resort,
Devikkulam



We offer the renovations include :-

Replacing tiles & flooring | Replacing windows | Bathroom remodeling | Electrical & Plumbing works | Water proofing roofs | Repainting | Refacing cabinets | Installing new light fixtures | Updating appliances | Adding new Hardware | Installing kitchen island | Raising Ceilings



Project : Kallar, Idukki
Client : George



Project : Ayyanthole, Thrissur
Client : Masha Sasi



Project : Udaya Nagar, Thrissur
Client : Soby Soman



Pre-Engineered Building (PEB)

Pre-Engineered Building (PEB) is a concept of structure having high structural strength, economical design while it supercedes the conventional fabrication, it lowers down the stress of foundation, hence there is less cost on civil construction as well. Tailor made buildings based on client's requirement and actual design calculations using tapered sections. An efficiently desined Pre-Engineered Building (PEB) can be lighter than the conventional steel building by up to 30%.

Boilex Metals is well equipped to produce Pre-Engineered Buildings (PEB) structure as per client's requirements. The company has all the latest machinery to support this segment. The entire design of Columns, Rafters and other accessories is based on international structural standards and invoice high technical welding and quality production.

Advantages of Pre-Engineered Building (PEB) Structures:

- > It is designed using international standards considering factors like weather conditions, wind velocity, seismic zone etc. of the location.
- > We design energy efficient buildings using skylight sheets, cladding louvers, self-driven ventilators, ridge vents, roof monitor design and many more.
- > High aesthetic appeal using latest design of gabble end, curves, bracket less gutters etc.
- > Flexibility in expansion.
- > Saving in construction time.

PEB structures comprises of:

- > *Primary Members include:*
Columns, Rafters, Crane beams, etc.
- > *Secondary Members include:*
Purlins, Bracings, Tie rods, Angle bracings, High tensile Bolts and washers etc.
- > *Roofing, Cladding & Accessories include:*
Top Roof sheets /panels, Side Cladding (Vertical) sheets/panels, skylights sheets, ventilators, louvers, downspouts, etc.



Application of PEBs

1. Factory
2. Warehouse
3. Workshop
4. Community Hall
5. Commercial Showroom
6. Cold Storage
7. Stadium
8. Parking Shed
9. Railway Platforms
10. Airports





Laying of Pipeline

Fire Protection System

Boilex Metals is Kerala's leading Fire Protection company with over decades of expertise. Our services cover the entire gamut of offshore, marine, aviation and commercial business sectors in Kerala. Fire Protection wing in our company was founded with the spirit of being a truly global company to provide the one-stop solution for all customer needs in fire protection systems. We benchmark the fire fighting industry with innovation, cutting-edge technology, customer satisfaction & environmental sustainability. We embrace our mission, push the limits of dynamism & focus on insights that make us the industry leader in absolute terms.

The fire hydrant system is the backbone of the firefighting systems in a building or premises. The purpose of the fire hydrant system is to provide a readily available source of water to any point throughout the building or premises. This helps in controlling fire during an emergency. A fire sprinkler is an active fire protection measure, consisting of a water supply system, providing adequate pressure and flow rate to a water distribution piping system on to which fire sprinklers are connected.

Mechanised Solutions

Grooved fittings to assemble the pipe instantly | Readymade pipe laying beds made of soil bags | Skid mounted pump assemblies with panel, pressure switches gauges, priming tank etc. which reduces the cost of installation & foundations needed are very small than the conventional systems | PU paints & anti corrosive coatings are used on pipes and fittings to enhance the life of the hydrant systems | Readymade GRP tank solutions available to reduce the pains of making civil tanks which are very time taking.

We are offering a fire safety consultancy, consists of quality & client satisfaction with complete services like designing, supply, installation, testing and commissioning of fire protection system.



HVAC (Chiller)

An HVAC (Heating, Ventilation and Air Conditioning) chiller is a crucial component in many cooling systems and process by using a refrigeration cycle.

We are specialized in

- > Air cooled chillers
- > Water cooled chillers
- > Absorption chillers



Cross Country Pipelines

These are an essential component of the energy and transportation infrastructure, providing a reliable and efficient means of transporting water over long distances. The construction of a cross country pipeline involves several phases, such as surveying & planning, clearing & grading, trenching, pipeline installation, testing and Commissioning.

Oil & Gas Pipelines

With the support of key industry leading software and technical experts from the connected industry, Boilex Metals programmers are based on the most up to date technologies and techniques of oil & gas piping engineering design and analysis procedure.



Mechanical and engineering services

We offer a comprehensive range of mechanical and engineering services tailored to meet the unique requirements of our clients, ensuring utmost satisfaction.

Roof Works



Gate works



Car Porche



Tiny Houses

A tiny house is a residential building that focuses on compact architecture. It allows for the creation of living space in a very small area. Boilex Metals provide a wide range of tiny houses designs with different types, including mobile variants and those with fixed pitches.



Advantages :

- Affordable
- Easy to use & Construct
- Get them where you want them
- Environment friendly

Container Homes





False Ceiling & Wall Partition with Boards

False Ceilings are made up of various materials such as Gypsum boards, plasters, aluminium panel, woods and others. False ceilings not only make the visual of the interiors beautiful but also act as an insulator to sound and fire.

False ceiling designs can help you change the look of any room. Be it living rooms or bedrooms, adding false ceiling designs are a great way to give your ceilings better definition and lighting.

False ceilings are a popular choice for modern interiors as they provide a clean finished look to a room. Gypsum board is a building material commonly used in false ceilings and partition. This material is made of gypsum, sandwiched between two sheets of heavy paper. The result is a light-weight, strong and fire resistant panel that is easy to install.

Partitions are also made from gypsum board. These are quick and easy to install, and they provide a high level of sound proofing and fire resistance.



Ceiling

- > Gypsum, PVC, Wooden glass

Board Partition

- > Panelling,
- > Boards(Gypsum, V-Boards),
- > Byson Panel

Gypsum-based partitions are extremely time-efficient and can be installed 3 to 4 times faster than masonry construction. Gypsum panels are also relatively large compared to other materials and, therefore, they easily cover large wall and ceiling spaces. They require very few tools for construction, and can be fixed within few hours. While their light weight makes them easy to carry, their durability allows a lifetime of strong, high quality walls.

HSE POLICY

SITE SAFETY RULES

Every year thousands of people are injured on construction sites. Follow these rules and stay safe.

1 ALWAYS WEAR PPE

PPE is your last line of defence against danger. It protects you if something goes wrong, and helps make sure you are seen. Wear it.



2 GET YOUR INDUCTION

Make sure you know what is happening on site so you can work safely. Your induction is important, don't start without one.

3 BE TIDY

Construction work is messy. Keep your work area tidy to reduce the risk of trips and slips, and fire hazards. Keep access routes clear.

4 ACT SAFE

Construction sites are dangerous places to work. Think safe and act safe throughout your shift.

5 FOLLOW SIGNS

Follow signs and procedures. Check risk assessments and systems of work. Control measures are put in place for your safety.



6 DO NOT ENTER

Never work in unsafe areas. Don't work at height without suitable fall prevention. Don't enter unsupported trenches. Don't work below crane loads or other dangerous operations.



7 REPORT

If you notice a problem, don't ignore it, report it to your supervisor immediately.

8 DON'T TAMPER

Never remove guard rails or scaffold ties. Do not remove guards. Do not attempt to fix defective equipment unless you are competent to do so. Do not ever tamper with equipment without authorisation.

9 USE THE RIGHT EQUIPMENT

Use the right equipment for the task. Check and test for defects before use. Use 110v equipment only, suitable for use on a construction site.



10 IF IN DOUBT, ASK

Better safe than sorry. Mistakes on construction sites can cost lives - don't let it be yours. If you need help or further information speak to your supervisor.



Environmental Policy

We focus on the design, development, construction and commissioning of infrastructure projects in Transportation, Water, Power, Buildings & Structures, and Oil & Gas verticals in chosen markets. We are committed to continually improve its environmental performance and to prevent pollution. Compliance with applicable legal and other requirements related to environmental aspects associated with our activities at all our work places shall be maintained. Optimization of fuel consumption and reduction of waste shall be our main focus throughout the organization.

Environmental Protection Policy:

The management of Boilex Metals considers Environment Protection as one of the core elements in our business. It is the philosophy of the company to achieve business excellence through Environment Protection; giving consideration and importance to our employees and Ecosystem.

Boilex Metals is committed to:

1. Implementation of an effective Environmental Management System to minimize adverse environmental aspects and impacts which would affect environment or Boilex Employees.
2. Provide the necessary education, training & skills and motivation to all employees. So, this policy is consistently implemented all throughout.
3. Applying latest technologies for Dust Control.
4. Use of alternative energies when possible.
5. On site waste segregation and recycling
6. Maintaining compliance with state laws and regulations, working with the authorities to ensure compliance to applicable rule.